

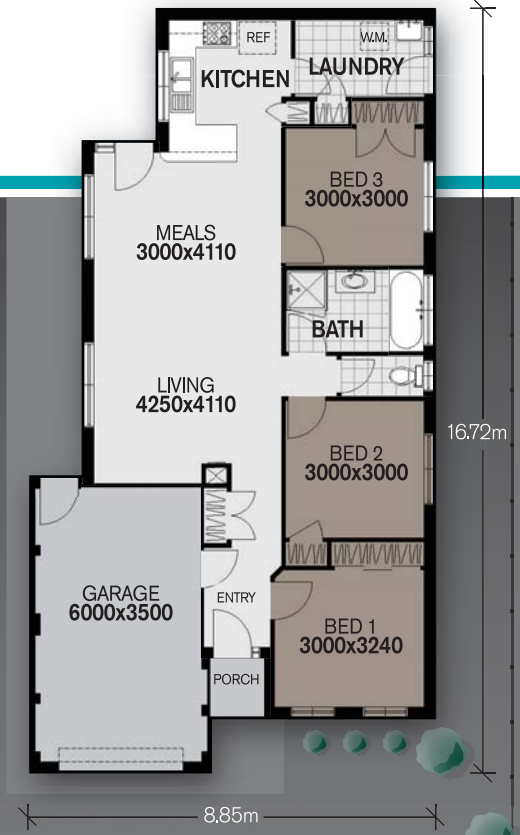
THE ADELINE

The Adeline offers exceptional value for money, catering for retirees looking to down size, the budget conscious or investors looking to add to their portfolio being ideal for narrow blocks.

The two facades options allow for either classic or colonial tastes when making a first impression upon arrival.

With three good sized bedrooms along with a smart open plan lounge room, this home is set to be one of the most affordable, yet quality homes for those looking for a manageable home to live in comfort.

Ask our friendly consultants today for assistance in developing your dream home.



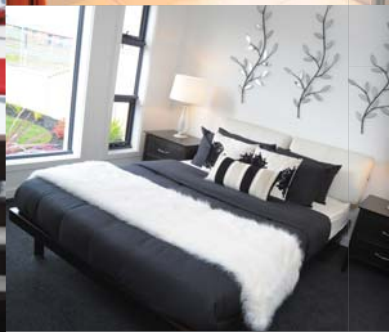
THE ADELINE

Areas sq metres.	Living:	101.04 m ²
	Garage:	24.15 m ²
	Porch:	1.70 m ²
	Total:	126.89 m ²
	Width:	8.85 m
	Depth:	16.72 m



DISPLAYED WITH THE CLASSIC FACADE
For more options, see details on the back

CHOOSE YOUR OWN FACADE



THE ADELINE. COLONIAL



THE ADELINE. CLASSIC

