

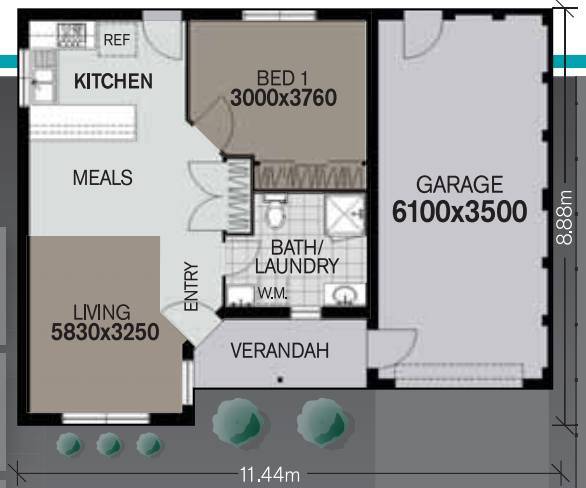
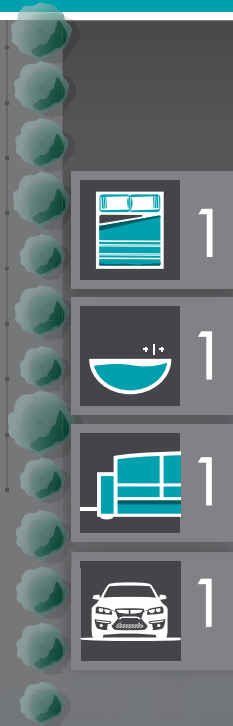
THE CASEY

The Casey is an ideal option for those looking to down size in retirement, or investors looking to expand their portfolio.

With two facades options, the choice is easy when building your new home.

Being one of the smallest designs in our range, the Casey provides simple living for those wishing to have a carefree lifestyle. With ample garage space and open living, this style of home is ideal for those wanting to enjoy life in a very manageable sized home.

Ask our friendly consultants today for assistance in developing your dream home.



THE CASEY 60

Areas sq metres.	Living:	59.38 m ²
	Garage:	30.56 m ²
	Porch:	5.32 m ²
	Total:	95.26 m ²
	Width:	11.44 m
	Depth:	8.88 m



DISPLAYED WITH THE COLONIAL FACADE
 For more options, see details on the back

CHOOSE YOUR OWN FACADE



THE CASEY. COLONIAL



THE CASEY. CLASSIC

