

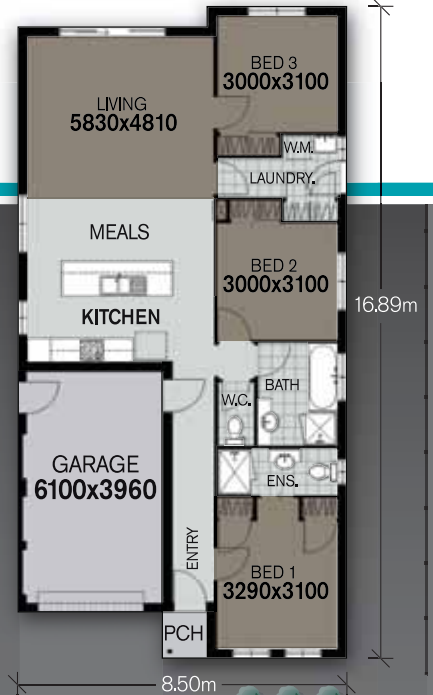
## THE CASTELLE

The Castelle is an ideal option for those looking to down size in retirement, or investors looking to expand their portfolio.

With two facades options, the choice is easy when building your new home.

The Castelle provides simple living for those wishing to have a carefree lifestyle. With able garage room and open living, this style of home is ideal for those looking for a compact, space efficient home to fit narrow allotments.

Ask our friendly consultants today for assistance in developing your dream home.



### THE CASTELLE

Areas sq metres.	Living:	111.90 m <sup>2</sup>
	Garage:	23.24 m <sup>2</sup>
	Porch:	1.36 m <sup>2</sup>
	Total:	136.50 m <sup>2</sup>
	Width:	8.50 m
	Depth:	16.89 m



**DISPLAYED WITH THE COLONIAL FACADE**  
For more options, see details on the back

CHOOSE YOUR OWN FACADE



THE CASTELLE. CLASSIC



THE CASTELLE. COLONIAL

